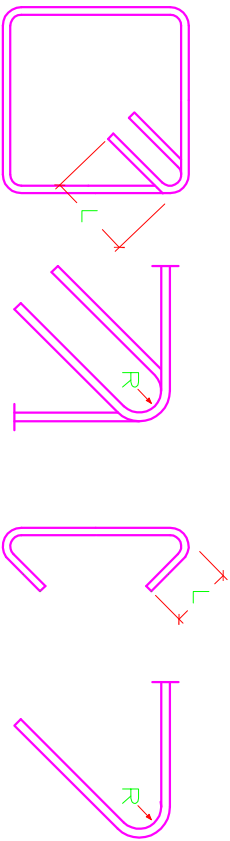
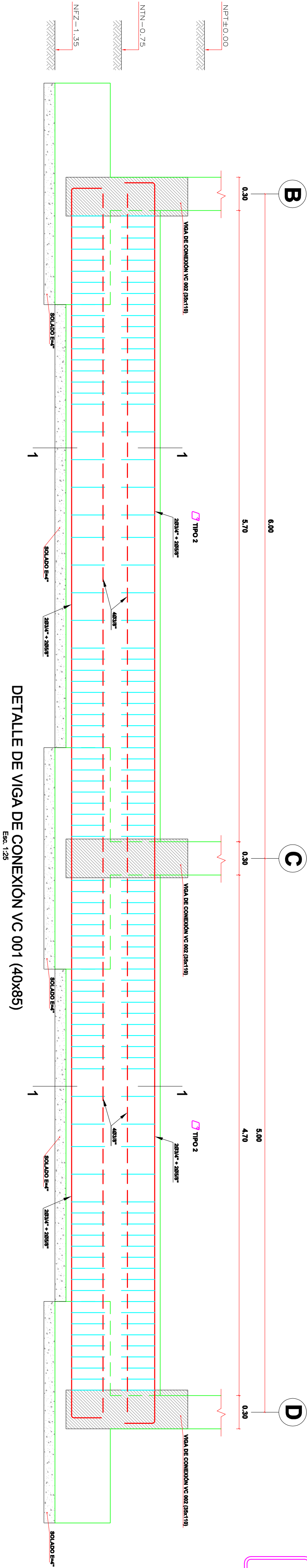


DETALLE DE ESTRIBOS Y GRAPAS

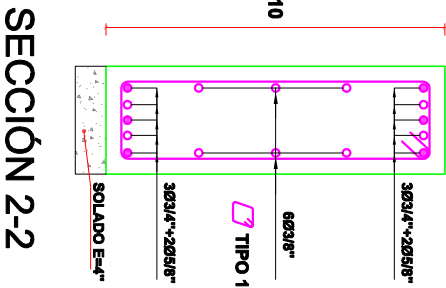
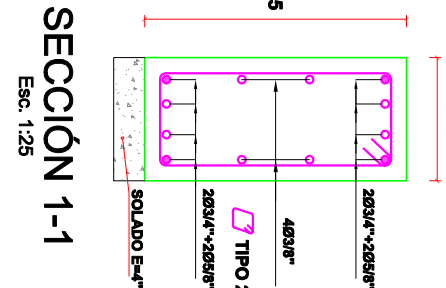


ØVarilla	L	R
6mm	7.5 cm	1.5 cm
1/4"	7.5 cm	1.5 cm
3/8"	10.0 cm	2.0 cm

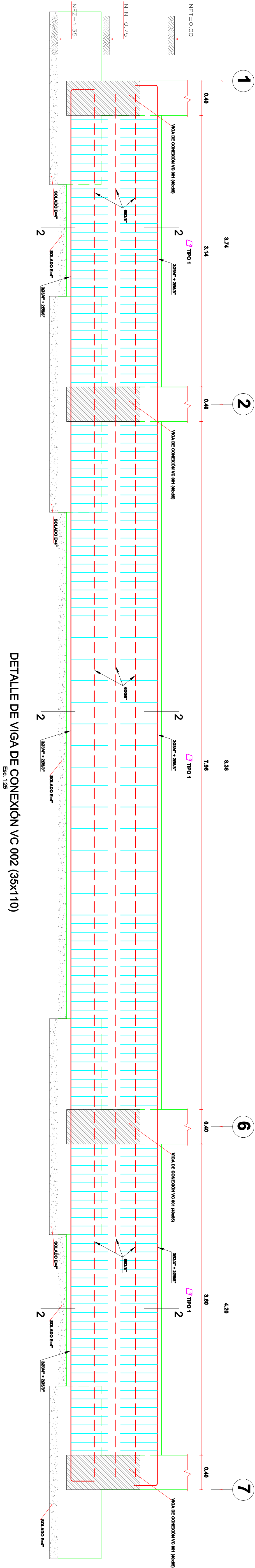


LONGITUD DE ANCLAJE Y TRASLAP			
ØVarilla	As Interior	As Superior	Traslape "Lr"
H (cualquier valor)	H < 0.30m	H ≥ 0.30m	
3/8"	0.30 m	0.35 m	0.40 m
1/2"	0.40 m	0.40 m	0.60 m
5/8"	0.45 m	0.45 m	0.60 m
3/4"	0.55 m	0.55 m	0.75 m
1"	1.15 m	1.15 m	1.50 m

<< No se empalmará más del 50% del refuerzo en una misma zona del elemento >>



CUADRO DE ESTRIBOS	
TIPO	Ø
1	3/8"
2	3/8"
3	3/8"
4	3/8"
5	3/8"
6	6mm
7	3/8"



ØVarilla	Longitud de desarrollo (Ldg)	Ldg (Con estribos en el nudo)	G	D
6 mm	13.5 cm	10.5 cm	10.0 cm	4.0 cm
1/4"	14.0 cm	11.0 cm	10.0 cm	4.0 cm
3/8"	21.0 cm	17.0 cm	12.5 cm	6.0 cm
1/2"	28.0 cm	22.5 cm	15.0 cm	8.0 cm
5/8"	34.5 cm	27.5 cm	20.0 cm	10.0 cm
3/4"	42.0 cm	33.5 cm	25.0 cm	12.0 cm
1"	55.5 cm	44.5 cm	30.0 cm	15.0 cm

